



Improving Advanced-Line Multiple Myeloma Care: Insights and Real-World Challenges from the EMMY Study

Titouan Cazaubiel et al. 2025

Table S1. Treatments received by patients at each line

	L4 n=786	L5 n=585	L6 n=380	L7 n=231
Glucocorticoids, n (%)	674 (85.8%)	461 (78.8%)	272 (71.6%)	160 (69.3%)
PI, n (%)	363 (46.2%)	258 (44.1%)	167 (43.9%)	86 (37.2%)
Bortezomib	141 (17.9%)	96 (16.4%)	62 (16.3%)	34 (14.7%)
Ixazomib	42 (5.3%)	38 (6.5%)	32 (8.4%)	15 (6.5%)
Carfilzomib	180 (22.9%)	124 (21.2%)	73 (19.2%)	37 (16%)
IMiD, n (%)	346 (44%)	177 (30.3%)	89 (23.4%)	53 (22.9%)
Thalidomide	2 (0.3%)	8 (1.4%)	8 (2.1%)	3 (1.3%)
Lenalidomide	98 (12.5%)	56 (9.6%)	42 (11.1%)	25 (10.8%)
Pomalidomide	246 (31.3%)	114 (19.5%)	39 (10.3%)	25 (10.8%)
Anti-CD38 mAb, n (%)	284 (36.1%)	187 (32%)	86 (22.6%)	34 (14.7%)
Daratumumab	238 (30.3%)	162 (27.7%)	73 (19.2%)	26 (11.3%)
Isatuximab	46 (5.9%)	25 (4.3%)	13 (3.4%)	8 (3.5%)
BCMA-targeted therapies, n (%)	22 (2.8%)	38 (6.5%)	28 (7.4%)	24 (10.4%)
CAR-T-cells	1 (0.1%)	3 (0.5%)	3 (0.8%)	0 (0%)
Belantamab Mafodotin	21 (2.7%)	35 (6%)	25 (6.6%)	24 (10.4%)
Alkylating agents, n (%)	196 (24.9%)	17 (30.3%)	135 (35.5%)	91 (39.4%)
Melphalan	24 (3.1%)	28 (4.8%)	24 (6.3%)	11 (4.8%)
Cyclophosphamide	134 (17%)	103 (17.6%)	58 (15.3%)	38 (16.5%)
Bendamustine	40 (5.1%)	54 (9.2%)	59 (15.5%)	44 (19%)
Others, n (%)	74 (9.2%)	92 (15.7%)	68 (17.9%)	48 (20.8%)

^a Corresponding author, Titouan Cazaubiel, e-mail: titouan.cazaubiel@gmail.com

Doxorubicine	34 (4.3%)	30 (5.1%)	22 (5.8%)	20 (8.7%)
Etoposide	20 (2.5%)	23 (3.9%)	15 (3.9%)	8 (3.5%)
Venetoclax	21 (2.7%)	28 (4.8%)	28 (7.4%)	11 (4.8%)

BCMA B-cell maturation antigen, CAR chimeric antigen receptor, IMiD immunomodulatory drugs, mAb monoclonal antibodies, PI proteasome inhibitors.

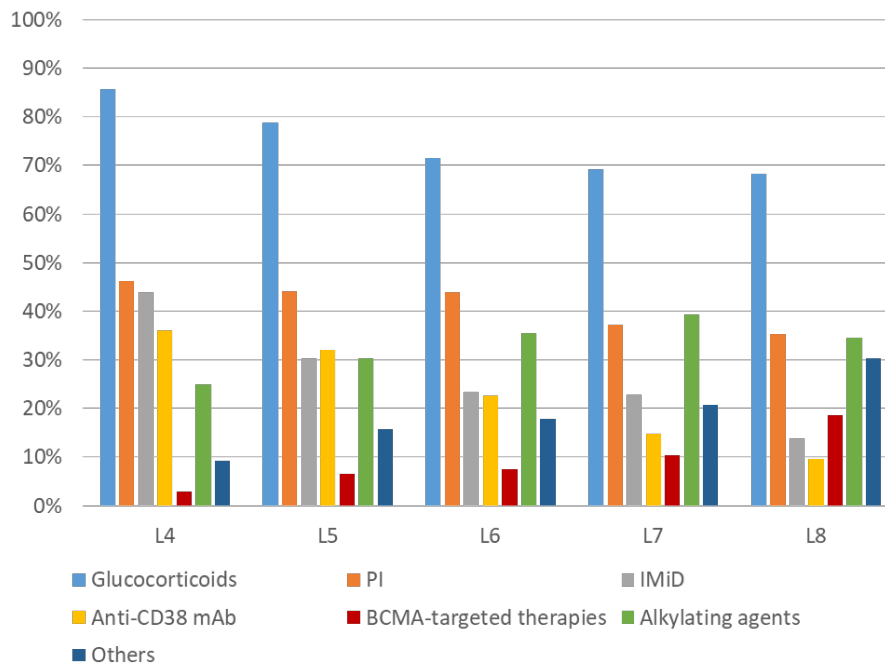


Figure S1 Class of drug received by patients at each line

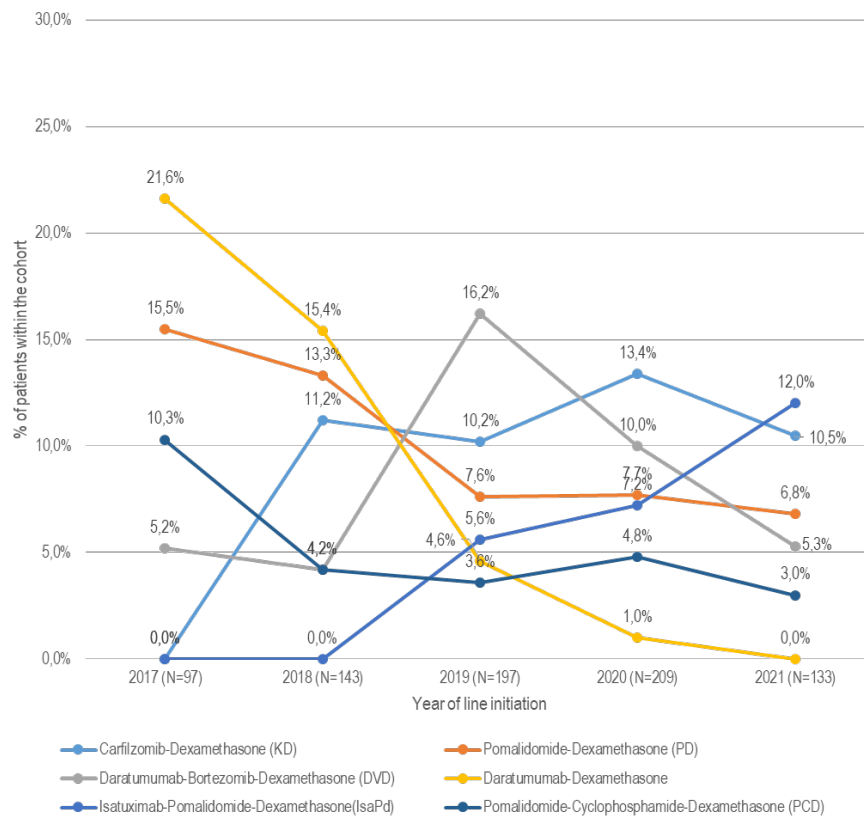


Figure S2 Type of regimen and class of drug use in L4 depending on the year of line initiation

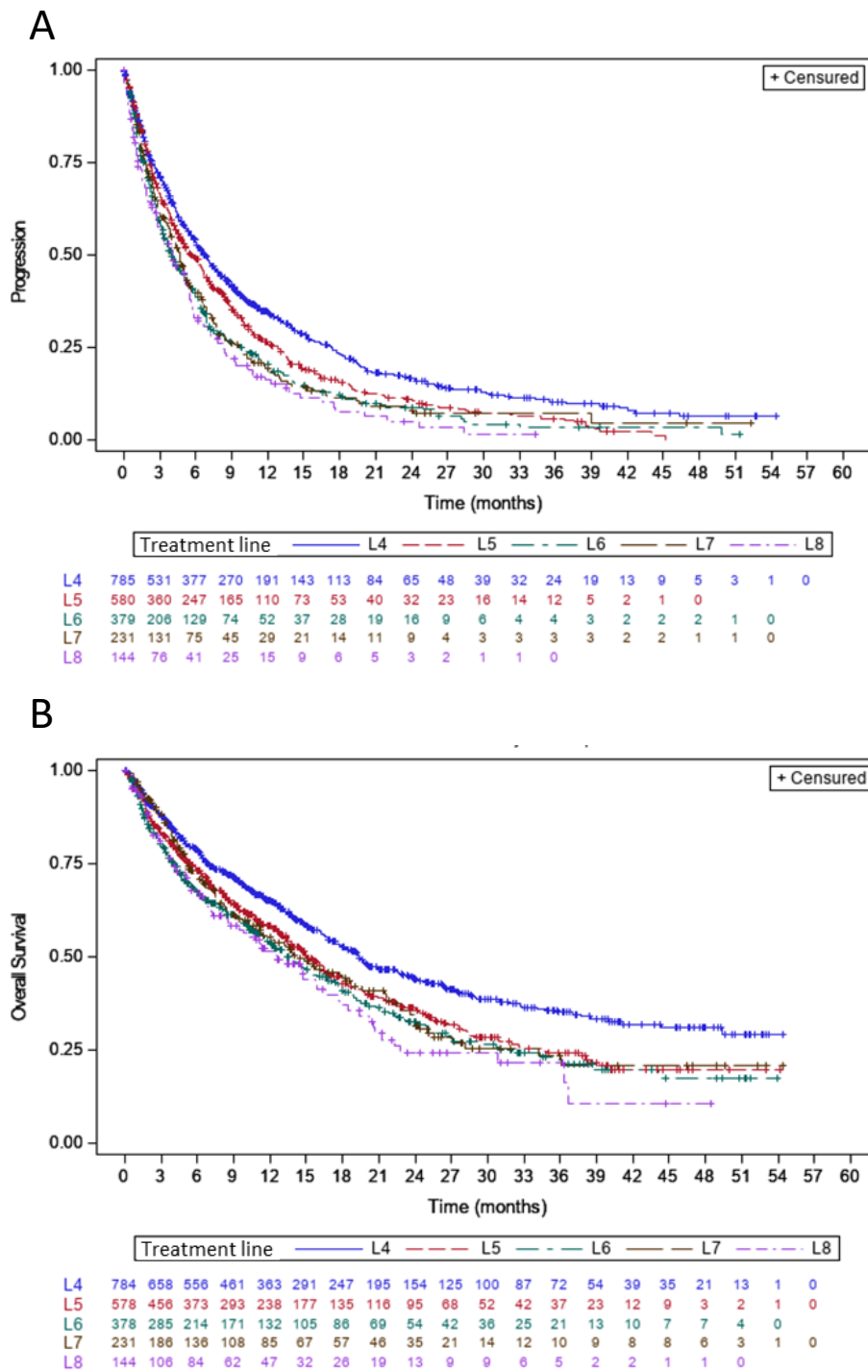


Figure S3 Progression free survival (A) and overall survival (B) in patients with advanced line therapy by treatment line