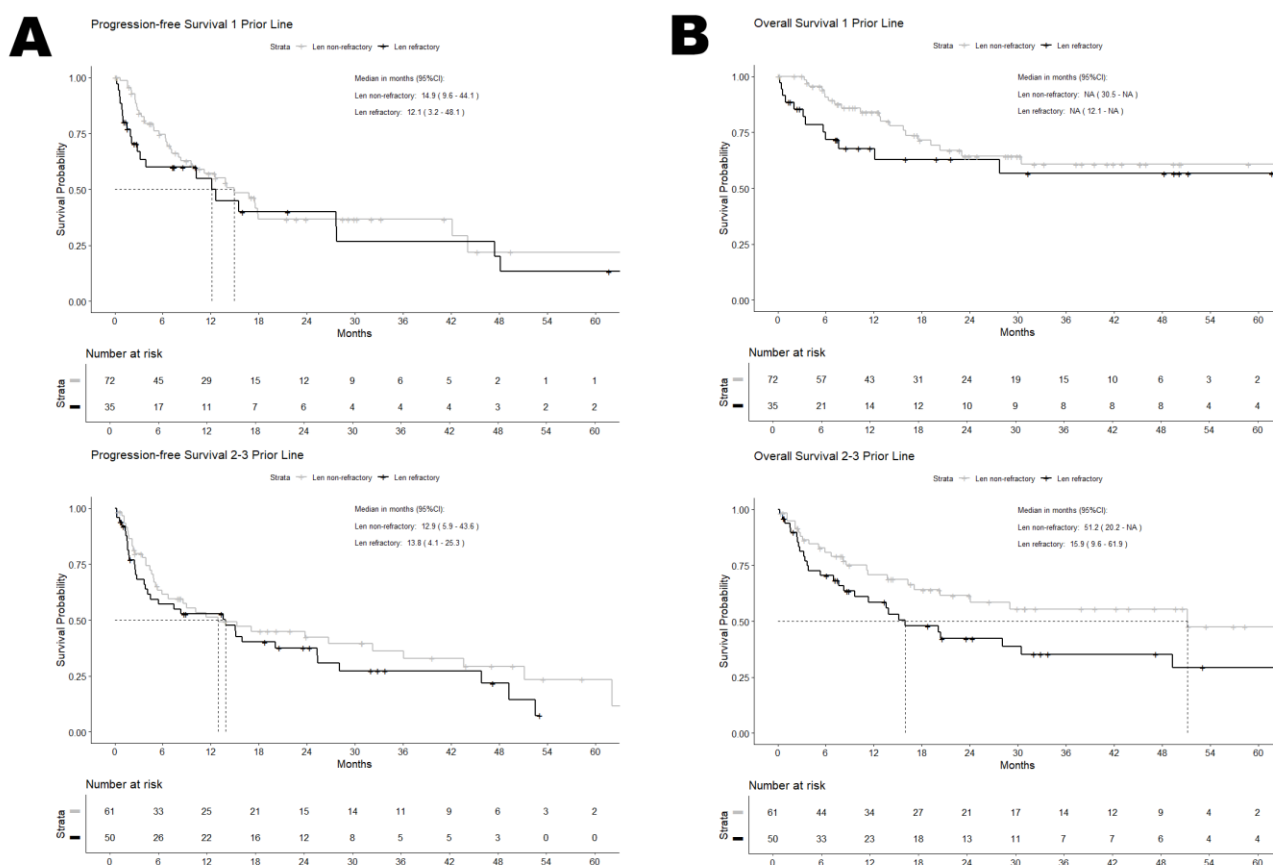


Online Resource 1. Progression-free Survival (A) and Overall Survival (B) for Len refractory and Len non-refractory patients stratified by 1 and 2-3 prior lines of treatment.*



* The Kaplan-Meier method was used to estimate survival. Survival time was calculated from the start of the subsequent treatment after study inclusion. Abbreviations: Len=lenalidomide. CI=confidence interval.